

# SPOT WHITE

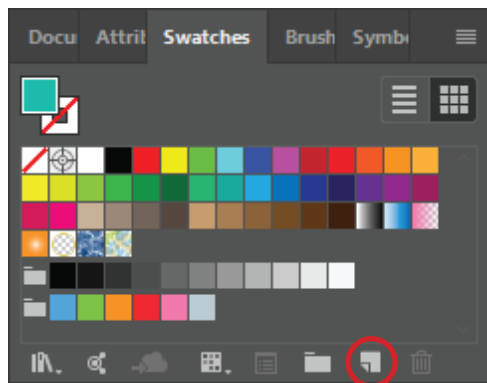
\* Please note for the best result we recommend using spot colours at 100%.

\* If you are using Spot White as a base with CMYK to be printed over the top, you will need to set your CMYK colours to overprint.

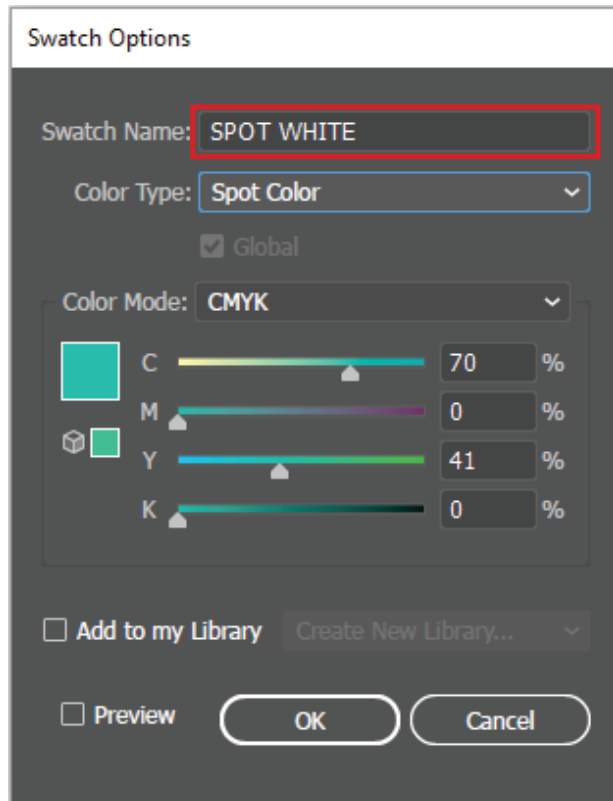
**1<sup>st</sup>** Select the elements of your design that need to be converted to Spot White



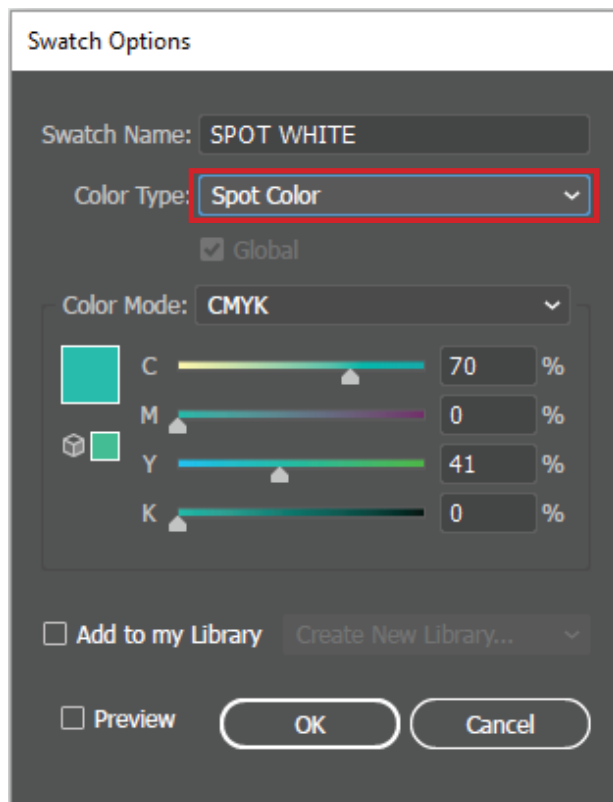
**2<sup>nd</sup>** Open the 'Swatch Panel' and click the 'New Swatch' option on the lower right side



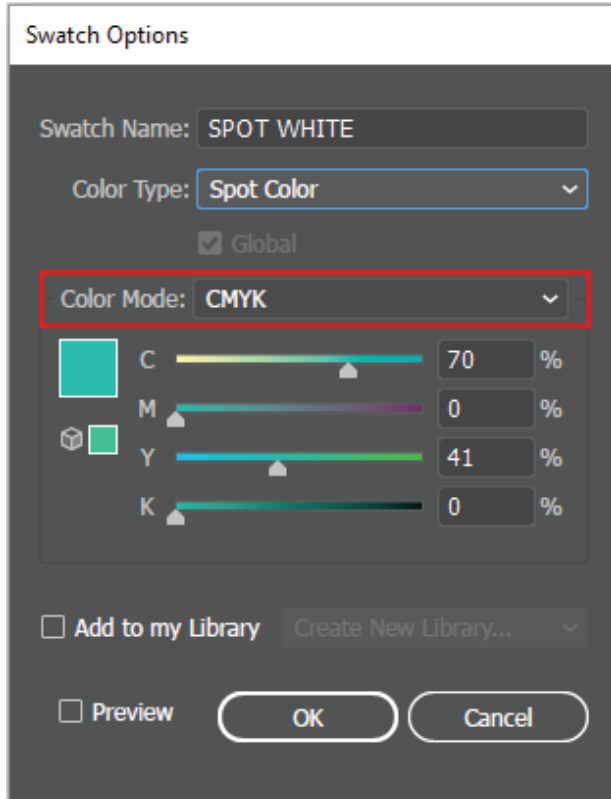
**3<sup>rd</sup>** Change the 'Swatch Name' to 'Spot White'



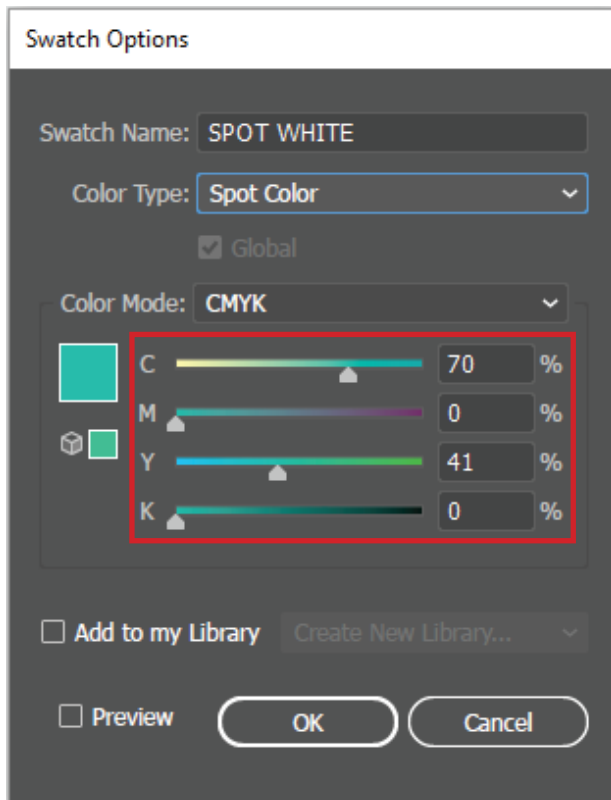
**4<sup>th</sup>** Change the 'Colour Type' to 'Spot Colour'



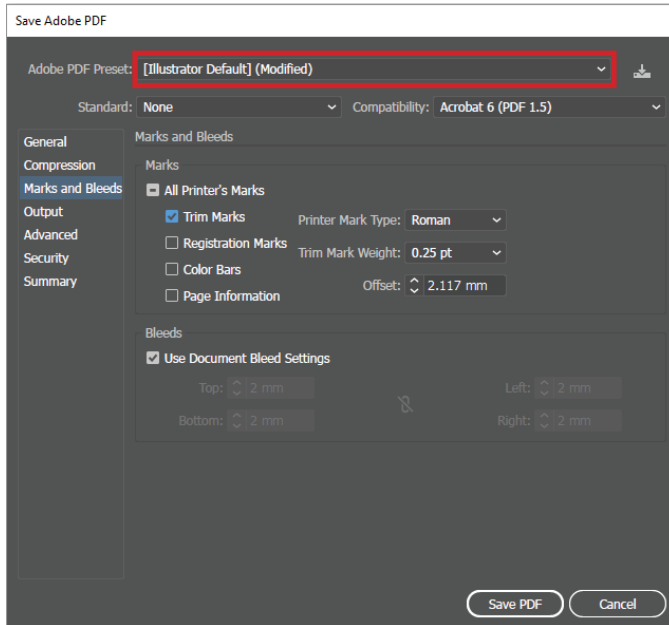
**5<sup>th</sup>** Ensure the 'Colour Mode' is set to CMYK



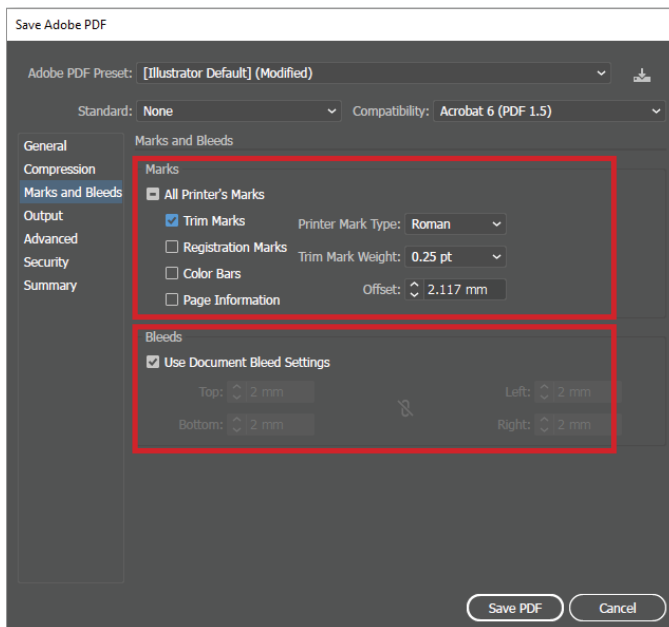
**6<sup>th</sup>** Set the CMYK values to 'C to 70% and Y to 41%'



## 7<sup>th</sup> Save as PDF



## 8<sup>th</sup> Go to Marks and Bleed Tab, check 'Trim Marks' and set the bleed to 2mm



**9<sup>th</sup>** In the 'Output' tab, make sure 'Colour Conversion' is set to 'No Conversion'

